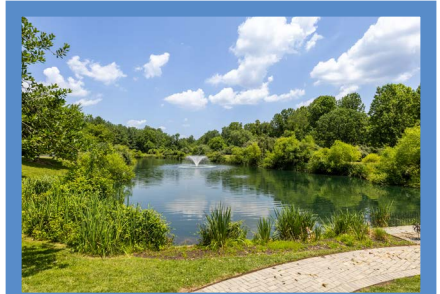


*Hubble  
Bisbee*

CHRISTIE'S  
INTERNATIONAL REAL ESTATE



THE RISTEAU  
2331 OLD COURT ROAD, UNIT 203



LOCATIONS

2330 W Joppa Road, Suite 104  
Lutherville, MD 21093

181 Harry S Truman Pkwy Ste 200  
Annapolis, MD 21401



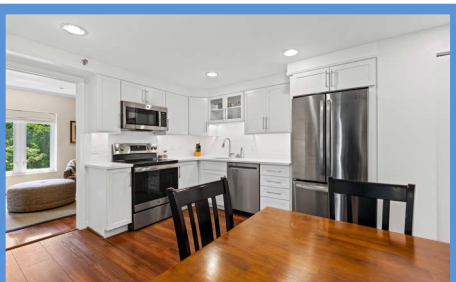
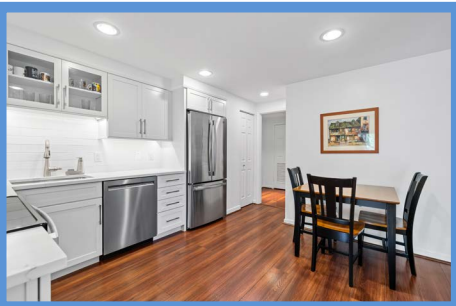
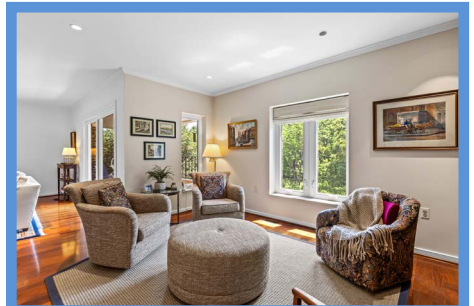
KAREN HUBBLE BISBEE

Principal, Associate Broker, ABR, GRI  
Karen@HubbleBisbee.com

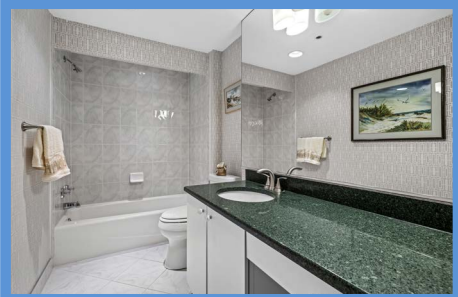
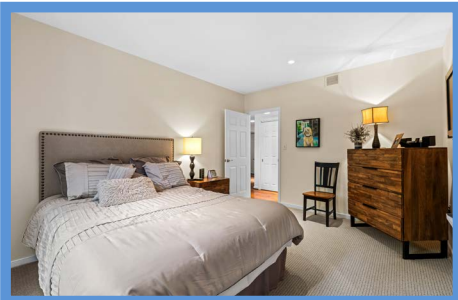
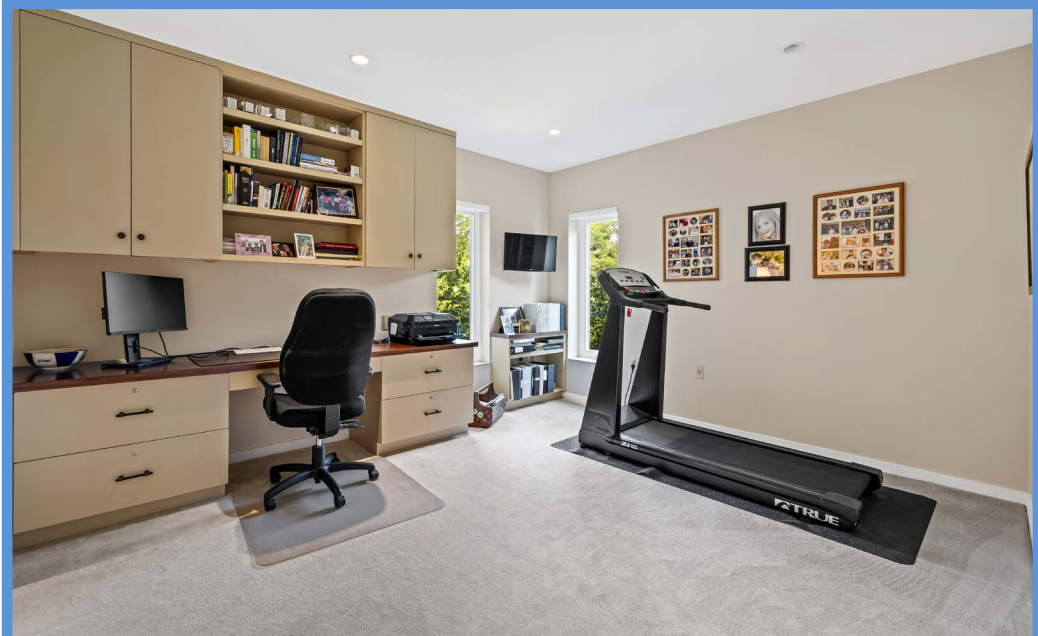
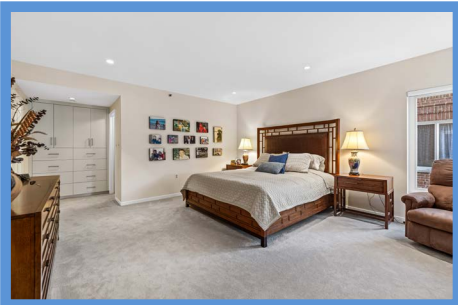
443-838-0438 (Mobile)  
410-321-1411 (Office)

WWW.HUBBLEBISBEE.COM | (410) 321-1411 (OFFICE) | 









### FOYER 12'4" X 5'9"

- Paneled entry door
- Brazilian cherry flooring
- Crown molding
- Coat/cloak closet
- Recessed lighting
- Access to Laundry/Utility Room
- Cased portal to Kitchen
- Flows to Dining Area

### DINING AREA 16'8" X 9'7"

- Brazilian cherry flooring
- Triple window
- Crown molding
- Recessed lighting
- Open flow to Living Room
- Wall sconce lights excluded

### LIVING ROOM 17'9" X 16'9"

- Brazilian cherry flooring
- Woodburning fireplace with colonial mantel, marble surround and hearth
- Sliding glass doors to deck
- Window
- Crown molding
- Recessed lighting
- Wide portal to Kitchen
- Flows to Den

### DEN 15'3" X 12'0"

- Brazilian cherry flooring
- Full-width wall of custom built-in cherry bookcases with base cabinets, TV niche and matching crown molding
- Double window with custom woven shade and additional window
- Crown molding
- Recessed lighting
- Cased portal to Kitchen

### KITCHEN 14'4" X 12'4"

- Total 2021 renovation including appliances
- Eat-in kitchen
- Luxury vinyl plank flooring
- Shaker style white wood cabinetry including glass-door cabinet, roll-out trays and refrigerator enclosure with upper cabinet
- Marble finish quartz counters
- Subway tile backsplashes
- GE stainless steel counter-depth French door refrigerator
- GE stainless steel 5-burner electric range
- GE stainless steel built-in microwave
- KitchenAid stainless steel dishwasher
- Oversize stainless steel undermount sink with Insinkerator disposal
- Table area
- Pantry closet
- Recessed lighting
- Under-cabinet lighting with dimmer option

### LAUNDRY/UTILITY ROOM 9'4" X 5'2"

- Access from Foyer
- Vinyl flooring
- Carrier electric HVAC unit

- Bradford White electric water heater- 2023
- Kenmore washer and dryer
- Electric service panel
- Built-in wall cabinets
- Beadboard wall panel
- Fluorescent ceiling light

### HALL 14'8" X 2'10"

- Brazilian cherry flooring
- Recessed lighting
- Double closet with hooks and shelves for brooms, vacuum and storage

### PRIMARY BEDROOM

#### 17'10" X 15'8"

- Wall-to-wall carpeting- 2023
- Double window with Hunter Douglas custom shade
- Recessed lighting
- Double pocket doors to Office
- Dressing area with custom built-in wardrobe cabinetry, large walk-in closet and access to Primary Bath
- Wall mount TV excluded, bracket to remain

### PRIMARY BATH

#### 10'5" X 8'10"

- Total renovation 2017
- Porcelain tile floor
- Double vanity with granite top, extra-deep Kohler undermount sinks, plate glass mirror, wall sconce lighting and recessed medicine cabinet
- Porcelain tile shower stall with built-in bench, wall niche and floor-to-ceiling glass door enclosure
- Pocket door to water closet with Kohler flush lower linen cabinet with granite top and built-in wall cabinet for additional linens and toiletries
- Recessed lighting
- Exhaust fans in shower stall and water closet
- Wall mount shaving mirror excluded

### OFFICE/BEDROOM 3

#### 14'6" X 13'6"

- Wall-to-wall carpeting- 2023
- Built-in desk with locking file drawers, wall cabinets and bookcase
- Two windows with Hunter Douglas custom shades
- Double closet
- Additional access from Hall
- Wall mount TV excluded, bracket to remain
- Treadmill negotiable

### BEDROOM 2 13'6" X 10'9"

- Wall-to-wall carpeting- 2023
- Window with Hunter Douglas custom shade
- Double closet
- Recessed lighting
- Panasonic wall mount TV

### HALL BATH 12'1" X 5'2"

- Marble finish ceramic tile floor
- Vanity/dressing table with granite top, undermount sink, plate glass mirror and overhead lighting
- Tub/shower combination with marble finish ceramic tile surround
- Kohler flush
- Recessed lighting
- Exhaust fan

### DECK 13'4" X 6'0"

- Sliding glass doors from Living Room
- Ceramic tile flooring
- Brick knee-walls with wrought iron railings

### PARKING

- Garage parking space #30 near elevator
- Outdoor space #42 near entrance to building
- Storage locker #30 in garage

### BUILDING AMENITIES

- Full-service building
- Concierge- 24/7 with doorperson
- Main level Library
- Main level Lounge
- Exercise Room on 2nd floor
- Outdoor Pool
- Tennis Court
- Outdoor grill for resident's use
- Outdoor brick Terrace overlooking gardens, fountain and Pool
- Community Pond with patio seating area and fire-pit
- Set amidst serene professional landscaping and gardens
- Close to Towson, Greenspring Station, Pikesville and expressways with easy commute to Hunt Valley and downtown Baltimore



*All information contained herein deemed reliable but not guaranteed by the Broker*